



Montažne kuće

**PROMO**

Donji Vakuf



#### NAPOMENA

Trodimenzionalni prikazi ne moraju odgovarati konačnom izgledu objekta. Na slikama su dati prijedlozi materijalizacije od strane arhitekta.

Dobro došli na stranice Kataloga Promo montažnih kuća. Pred Vama je živopisno putovanje u slici i riječi kroz svijet gradnje montažnih kuća sa mnogo raznovrsnih arhitektonskih rješenja, tehničkim opisima i istaknutim prednostima svake pojedine kuće. Vjerujemo da ćete uživati listajući naš katalog, kao i da ćete pronaći kuću u čiji izgled ćete se zaljubiti. Zajednička osobina svih naših kuća je njihova izuzetna energetska učinkovitost i ekološka prihvatljivost, kao i kvalitet i brzina gradnje. Hiljade zadovoljnih kupaca širom Evrope su naša najbolja preporuka.

DOBRODOŠLI U PROMO PO SVOJU KUĆU!

Welcome to Promo, we have decades of experience in manufacturing prefabricated houses. Our catalogue is designed to showcase Promo's beautiful, modern and comfortable homes. Each home is built with exceptional architectural detail and technical design. We offer tailor made solutions to specially fit our client's needs, therefore each home is a unique experience in itself. We encourage our clients to work together with our experienced design team to create their dream home. All Promo's homes are built with quality and speed and adhere to the highest standards of energy efficiency and environmental friendliness. Our best recommendation is our thousands of satisfied customers throughout Europe.

We are delighted to welcome you to Promo





# PRIZEMNE KUĆE / SINGLE-STORY HOUSES

06

CALLA  
BTP=83m<sup>2</sup>



08

VIOLA  
BTP=100m<sup>2</sup>



10

NOBILIS  
BTP=101m<sup>2</sup>



12

CAROTA  
BTP=106m<sup>2</sup>



14

LINNEA  
BTP=125m<sup>2</sup>



# 16

GRANADA

BTP=133m<sup>2</sup>



# 18

DRACENA

BTP=141m<sup>2</sup>



# 20

BETULA

BTP=154m<sup>2</sup>



# 22

SOL

BTP=160m<sup>2</sup>



# 24

ROSA

BTP=162m<sup>2</sup>



# CALLA



BTP=83m<sup>2</sup>+trijem i carport 26,8m<sup>2</sup>

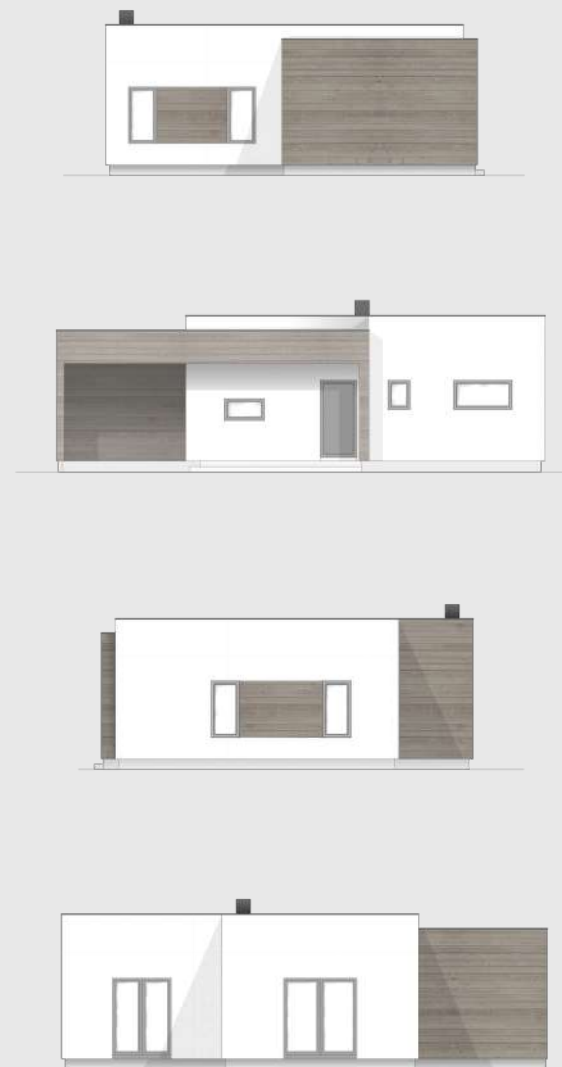
Ugodan dom smješten u 83 m<sup>2</sup>, koji zadovoljava sve potrebe manje porodice, a da bi ugodaj bio potpun, tu je i smještaj za vašag četvorotočkaša.

A compact, snug home of 83m<sup>2</sup>, meeting all the needs of the smaller family and, to top it all, there is also space for your family saloon.





OSNOVA PRIZEMLJA / GROUND FLOOR



# V I O L A

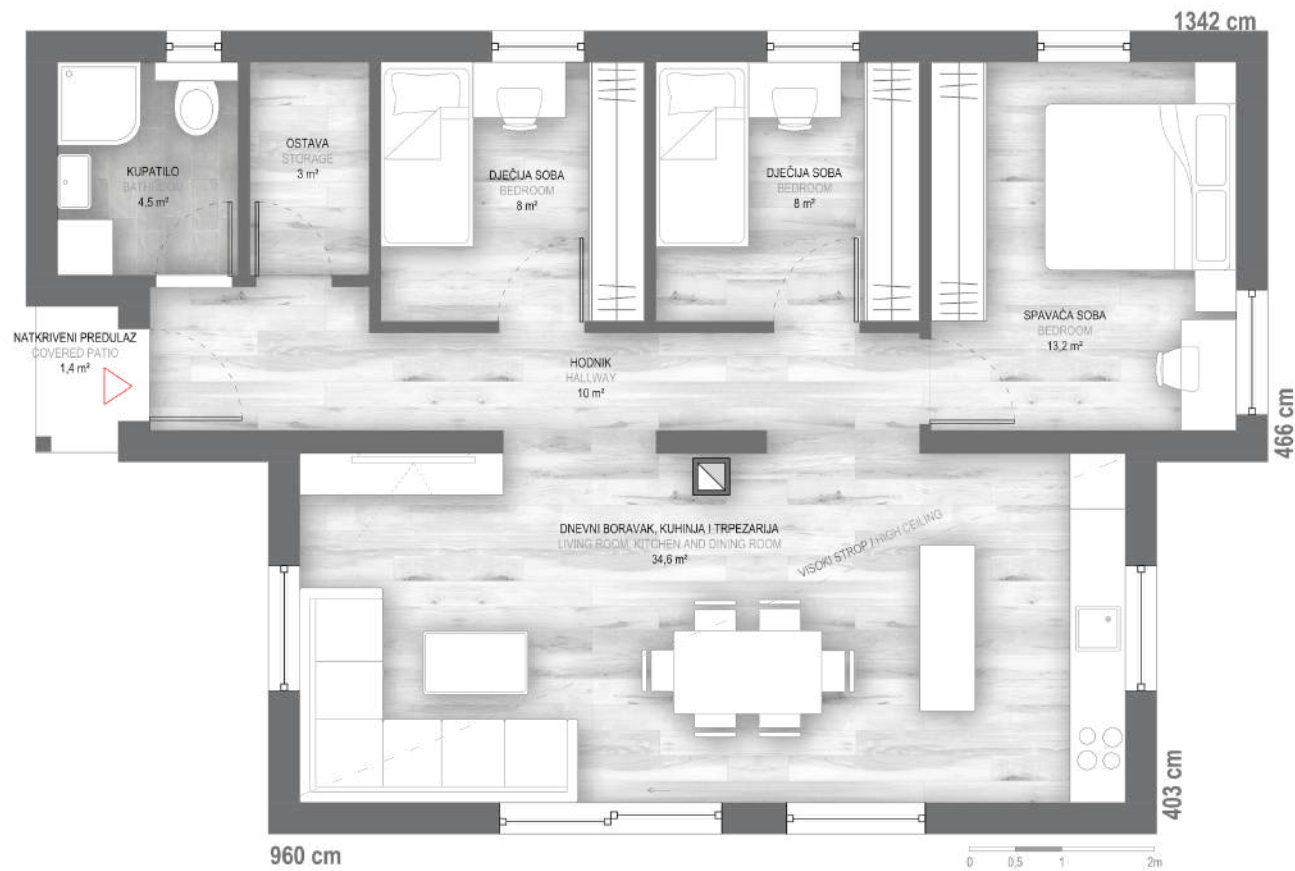
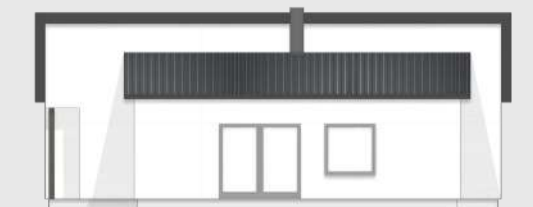
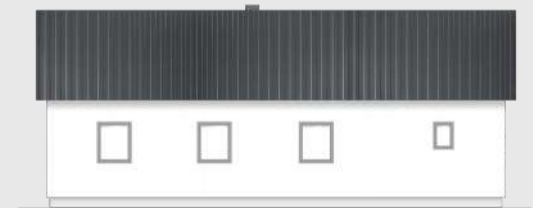


BTP=100m<sup>2</sup> + trijem 1,4m<sup>2</sup>

Spojem naizgled jednostavnih eksterijernih arhitektonskih rješenja proizveli smo ovu modernu prizemnicu sa idealnim, funkcionalnim enterijerom.

Within this seemingly simple exterior architecture, we created a modern single-storey house with an ideal functional interior.

## FASADE / FACADES



## OSNOVA PRIZEMLJA / GROUND FLOOR



# N O B I L I S

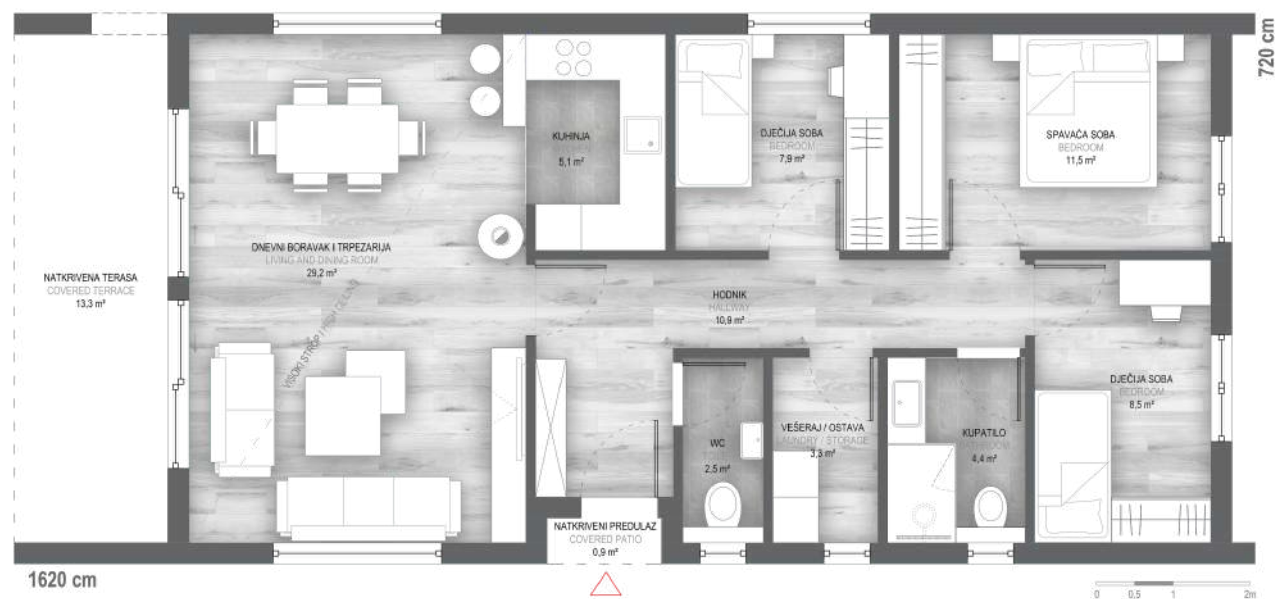


BTP=101m<sup>2</sup> + natkrivena terasa 13,2m<sup>2</sup>

Još jedna kuća koja svojim izgledom prati najbolje dostignuća skandinavske gradnje montažnih objekata, a svoju punu vrijednost dobit će pravilnim pozicioniranjem u odnosu na sunčanu stranu.

The external appearance of the Nobilis exemplifies the pinnacle of the Scandinavian prefabricated building style. Careful positioning and orientation in relation to the sun will maximize the airy, open characteristics of this home...





OSNOVA PRIZEMLJA/GROUND FLOOR

FASADE/FACADES



# CAROTA



BTP=106m<sup>2</sup> + trijem 2m<sup>2</sup>

Želite topli porodični dom na relativno maloj površini u kojem će svaki član, ipak, imati i svoj intimni kutak, onda je kuća Carota rješenje za vas.

Should you wish to acquire a warm family home on small plot of land in which every family member will retain their own intimate corner then our Carota house is the right solution for you.



OSNOVA PRIZEMLJA/GROUND FLOOR

## FASADE/FACADES





# LINNEA



BTP=125m<sup>2</sup> + trijem i terasa 25,3m<sup>2</sup>

Vještom igrom sa pravilnim geometrijskim oblicima i tijelima projektirali smo ovu modernu kuću u kojoj su razdvojene zajedničke prostorije i sobe za odmor, a opet i spojene u skladnu cjelinu.

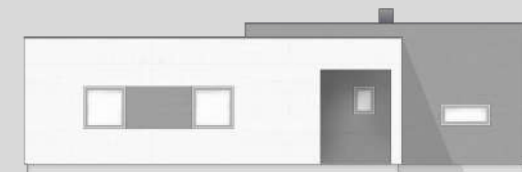
By skilfully playing with regular geometric shapes and forms, we designed this modern house in which common living areas and spaces for relaxation are seemingly separated yet merged into a harmonious whole.



## FASADE / FACADES



OSNOVA PRIZEMLJA / GROUND FLOOR



Montažne kuće

**PROMO**

Donji Vakuf

# GRANADA



BTP=133m<sup>2</sup> + trijem i terasa 25,3m<sup>2</sup>

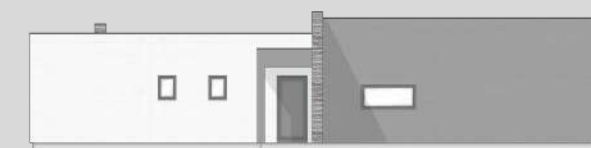
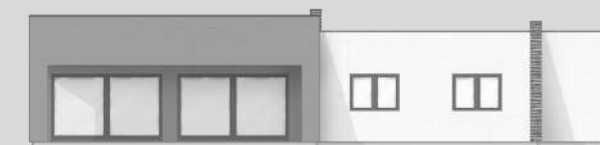
Provjerite zašto smo ovu kuću punu svjetla, koja svojim oblikom naprosto izaziva osjećaj topline, nazvali po sunčanom španskom gradu, mjestu u kojem se nalaze neke od najljepših građevina ikad napravljenih.

Full of light and with a clean shape evoking a feeling of warmth, it becomes apparent why we named this house after the sunny Spanish city, a city known for its beautiful buildings.



OSNOVA PRIZEMLJA/GROUND FLOOR

## FASADE/FACADES





# DRACENA



BTP=141m<sup>2</sup>

Blagim odstupanjima od zadane forme kuće sa četvorovodnim krovom, napravili smo komotan dom u kojem moderni elementi predstavljaju prirodnu nadogradnju tradicionalnih oblika.

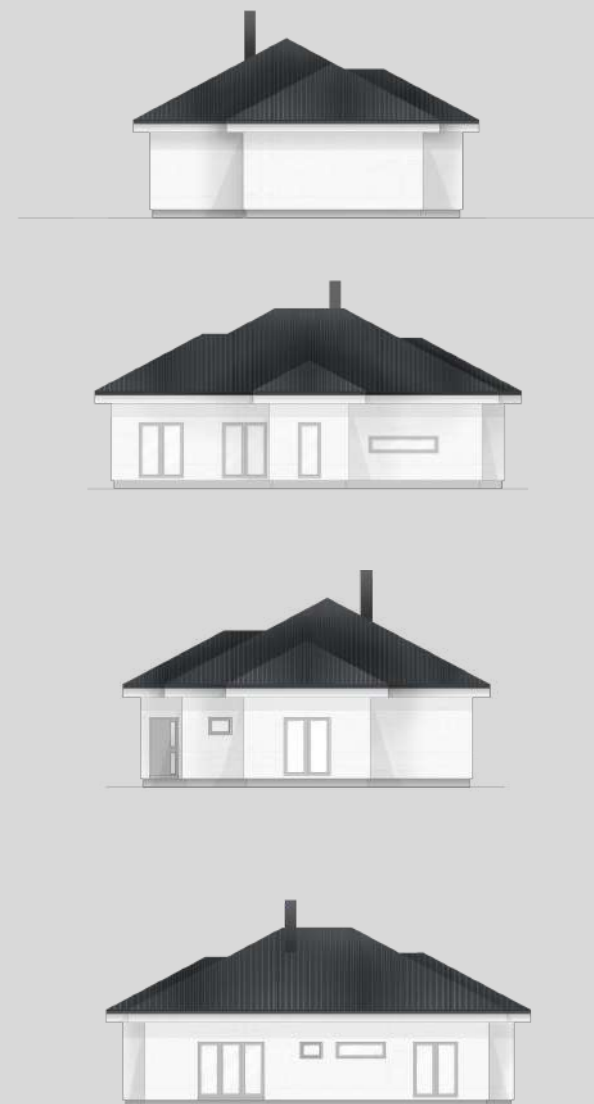
By slightly deviating from a conventional hipped-roof house, we created a comfortable home in which modern elements provide a natural upgrade of traditional forms.





OSNOVA PRIZEMLJA/GROUND FLOOR

## FASADE/FACADES



# BETULA



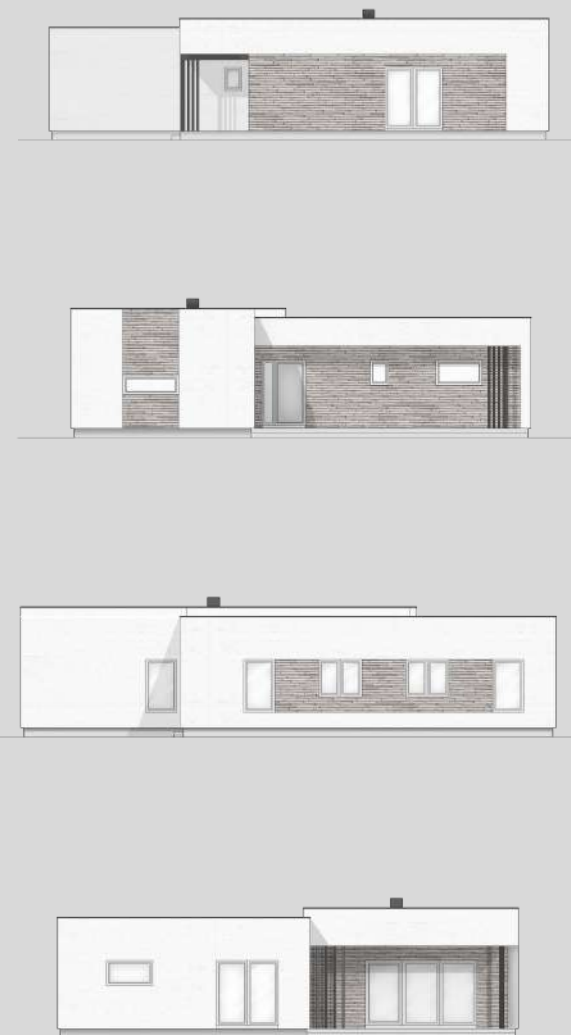
BTP=154m<sup>2</sup> + trijem i terasa 27,5m<sup>2</sup>

Za sve koji imaju ili planiraju imati višečlanu obitelj te imaju dovoljno prostora za gradnju široke prizemne kuće, napravili smo ovaj komotni dom sa pet soba za odmor.

We designed this five-bedroom comfortable home for anyone who has, or plans to have, a large family and who has enough land on which to build a spacious single-storey house.



OSNOVA PRIZEMLJA / GROUND FLOOR





# S O L

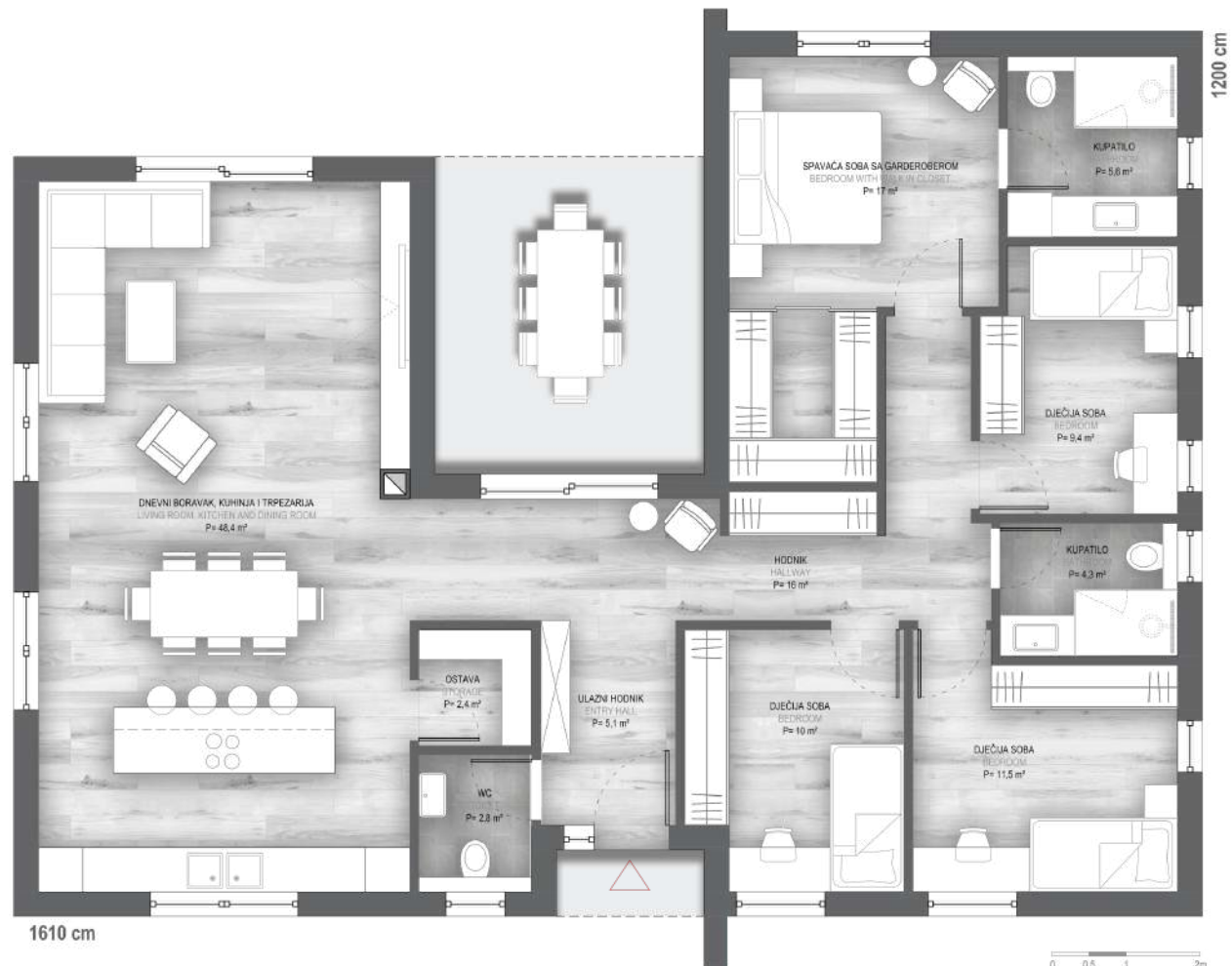


BTP=160m<sup>2</sup> + trijem i terasa 17,5m<sup>2</sup>

Široka prizemna kuća sa savremeno dizajniranim funkcionalnim enterijerom koji će zadovoljiti potrebu za komoditetom svih njenih stanara, kako u njihovim zasebnim prostorijama, tako i u prostranom dnevnom boravku.

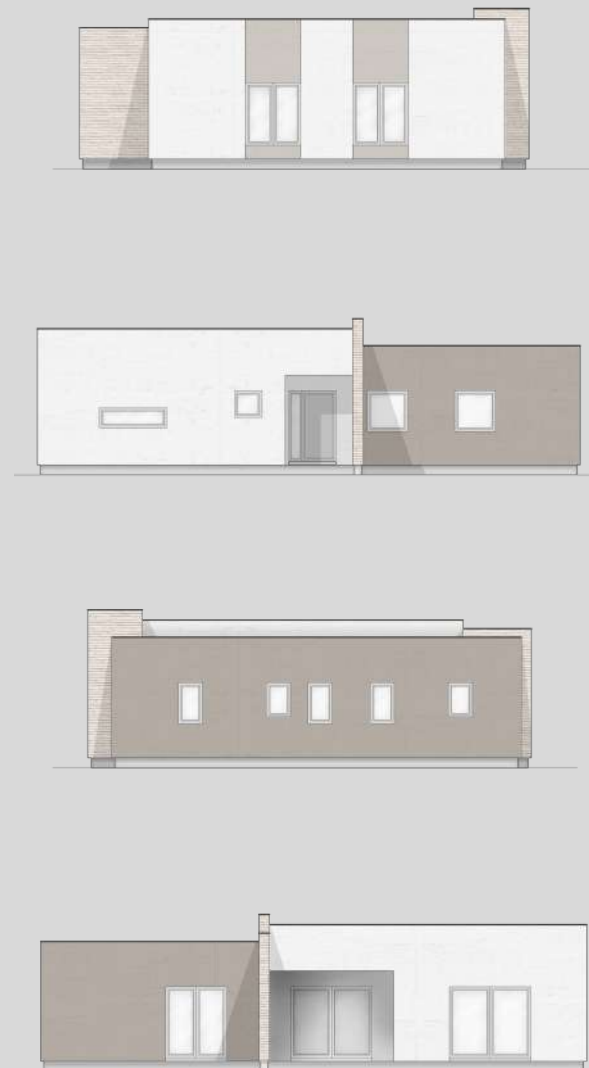
A large single-storey house with a contemporary interior, designed for functionality, that will satisfy the needs and comfort of all of its residents, both in their private rooms as well as in their spacious living room area.





OSNOVA PRIZEMLJA/GROUND FLOOR

## FASADA/FACADES



Montažne kuće

**PROMO**

Donji Vakuf

# ROSA



BTP=162m<sup>2</sup> + trijem 1,5m<sup>2</sup>

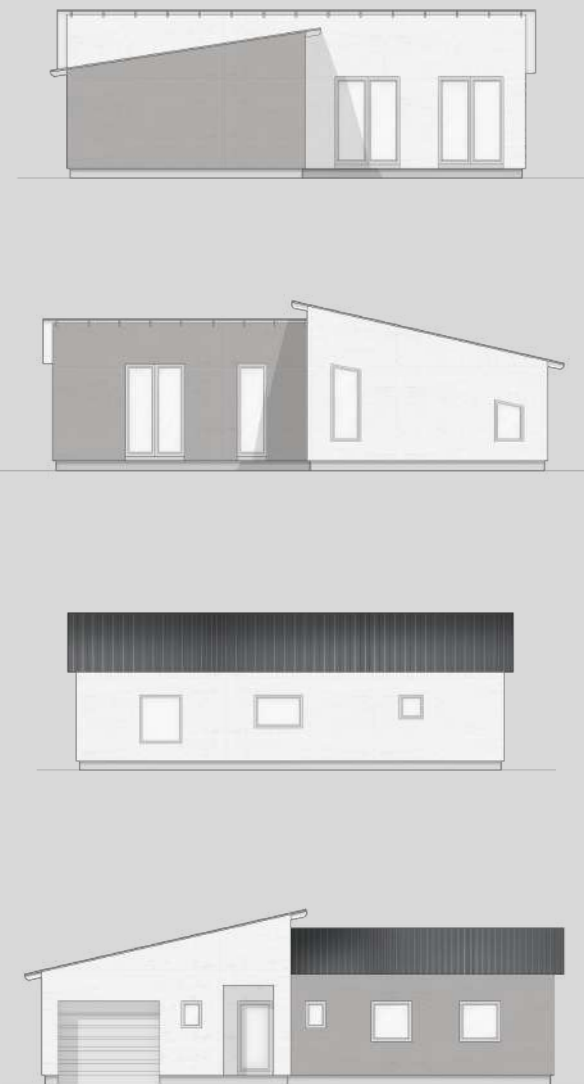
Kuća na lakat kojoj podlakticu čine prostorije za odmor, a nadlaktica je široki zajednički prostor, dok se u unutrašnjosti nalazi terasa odvojena od pogleda za intimne porodične trenutke na otvorenom.

An L-shaped house where the longer wing houses the bedrooms and the shorter extension contains a wide common area; whilst the terrace, located in the inside of the structure's "elbow", provides for a fresco seclusion and intimate family moments.



OSNOVA PRIZEMLJA/GROUND FLOOR

FASADE/FACADES





28

LOTUS

BTP=124 m<sup>2</sup>



30

LARIX

BTP=141 m<sup>2</sup>



32

ARNICA

BTP=149 m<sup>2</sup>



34

VERBENA

BTP=155 m<sup>2</sup>



36

OLEA

BTP=163 m<sup>2</sup>



# 38

CASIA

BTP = 163 m<sup>2</sup>



# LOTUS

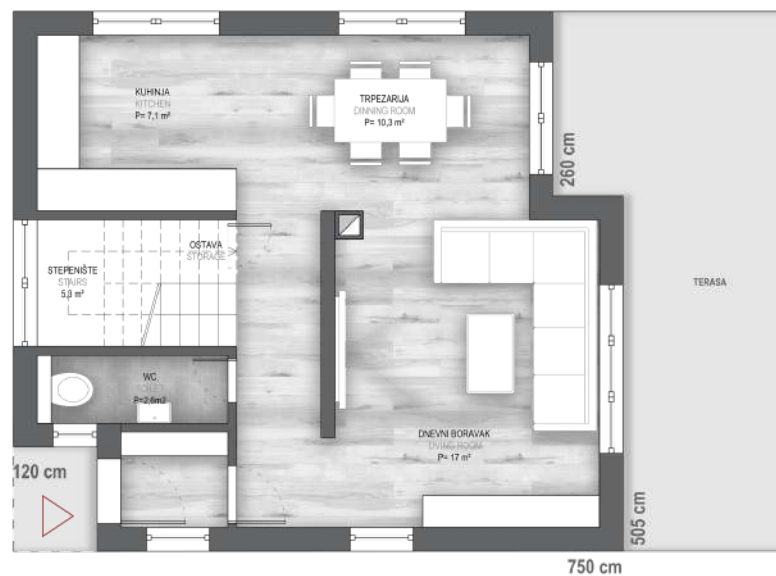


BTP=124m<sup>2</sup> + trijem 1,7m<sup>2</sup>

Svima koji na manjoj površini žele napraviti lijepu porodičnu kuću koja sadrži sve potrebne prostorije, spratna kuća Lotus će otkloniti sve dileme o izgledu njihovog budućeg doma.

For all who wish to build a beautiful family home, with clean lines, on a slightly smaller property but without compromising on interior space, this two-storey house provides the perfect compromise to meet all aspirations.



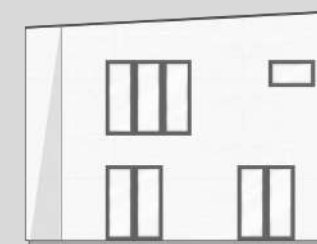
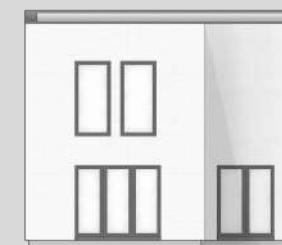
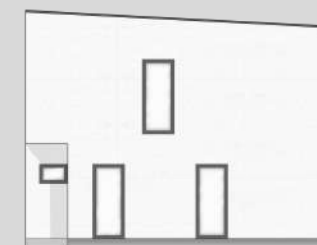
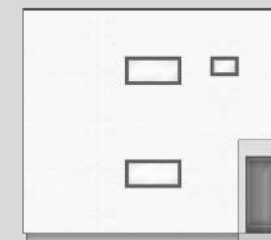


**OSNOVA PRIZEMLJA/GROUND FLOOR**



**OSNOVA SPRATA/ FIRST FLOOR**

## FASADE/FACADES



# L A R I X



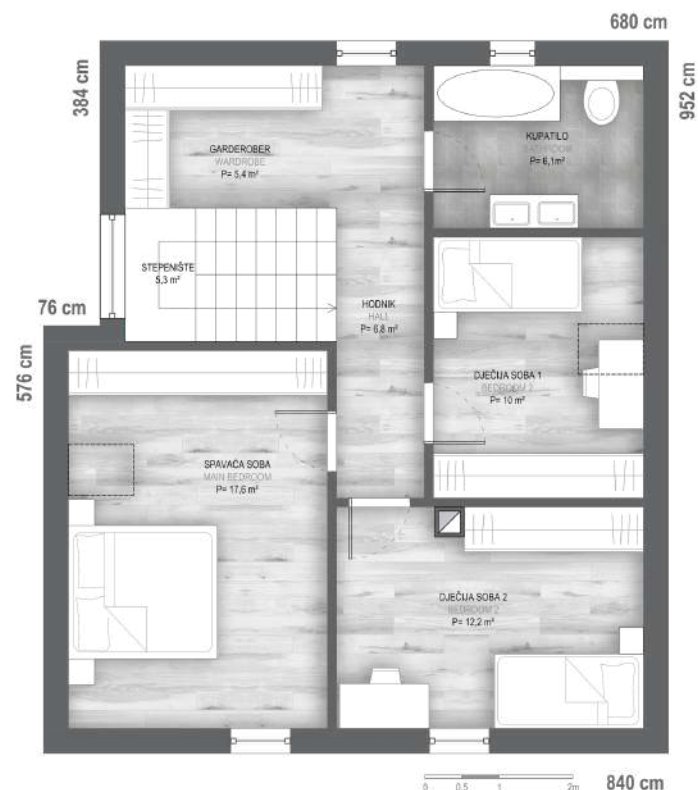
BTP=141m<sup>2</sup>

Na temeljnoj osnovi od svega 64 m<sup>2</sup> nudimo komotnu spratnu kuću čiju smo prostranost dodatno uvećali širenjem površine na spratu, istovremeno kući dajući savremeniji eksterijer.

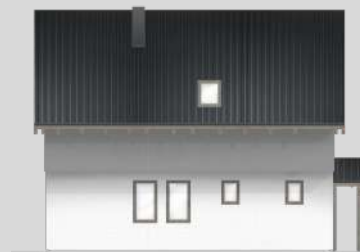
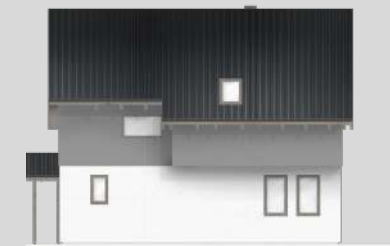
Utilising the slightly smaller downstairs area of only 64m<sup>2</sup> we created a spacious home by building a cantilevered, expanded area upstairs that not only increases space but also gives the house a contemporary, sophisticated appearance.



OSNOVA PRIZEMLJA / GROUND FLOOR



OSNOVA SPRATA / FIRST FLOOR





# ARNICA



BTP=149m<sup>2</sup> + nadstrešnica i trijem 12,8m<sup>2</sup>

Arnica je kuća za sve koji vole visoke stropove i jako puno prirodnog, sunčevog svjetla u prostoriji za dnevni boravak, a da se jedan takav svjetlarnik savršeno uklopi sa ostatkom enterijera u jedinstven savremeni vanjski oblik.

Arnica is the house for anyone who loves high ceilings and plenty of natural sunlight in the living room area and where one window-clad wall fits in perfectly with the rest of the interior, all incorporated within a simple modern exterior.



0 0.5 1 2m





# VERBENA

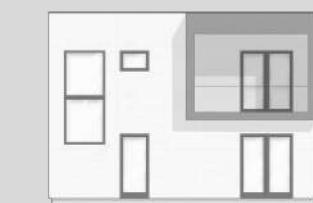
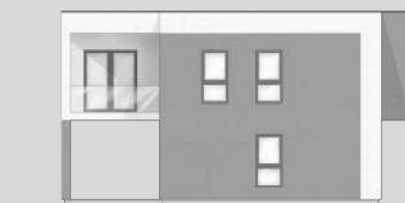
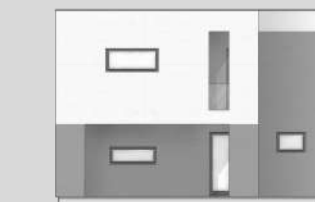
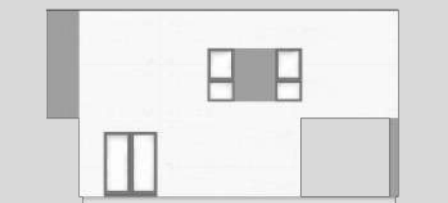


BTP=155m<sup>2</sup> + carport i terasa 32,4m<sup>2</sup>

U našim projektima uvijek nastojimo spojiti ljepotu i funkcionalnost i posebno smo ponosni na ovu kuću u kojoj izvučeni dio sprata razbija gotovo kvadratni oblik, a ujedno služi i kao savršeno sklonište za vaš automobil.

When designing our homes we always aspire to combine beauty and function. We are very proud to present this house with its upstairs, cantilevered wing breaking its rectangular shape whilst simultaneously serving as a perfect shelter for your car.





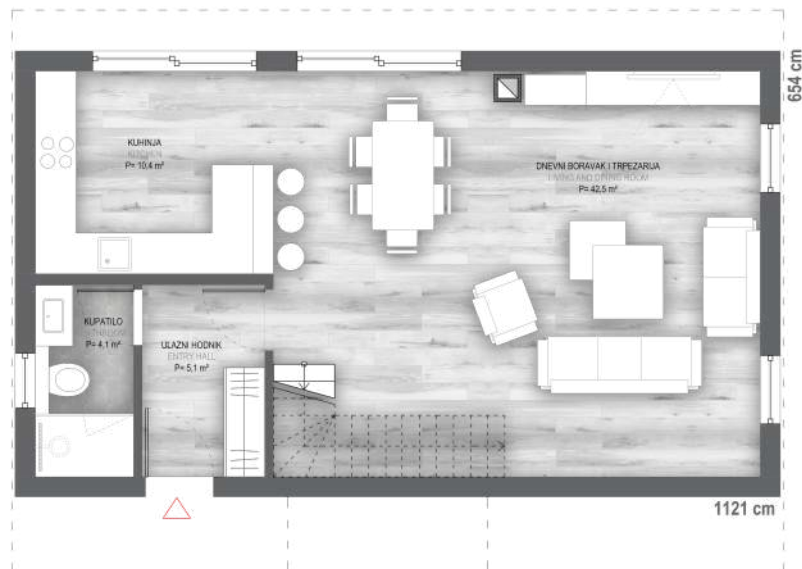
# OLEA



BTP=163m<sup>2</sup>

Kombinacijom drvene i klasične fasade dali smo izuzetno privlačan vanjski izgled ovoj kući, a moderan eksterijer u sebi krije isto tako moderan i veoma funkcionalan unutrašnji raspored sa komotnim, ali ne predimenzioniranim, prostorijama.

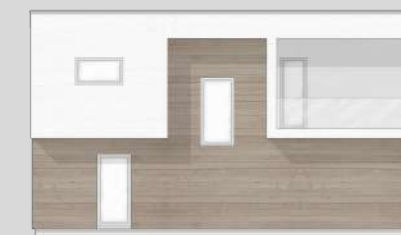
With a classical wooden façade we created this very attractive modern exterior whilst the interior offers a very functional layout with comfortable yet not oversized spaces.



OSNOVA PRIZEMLJA / GROUND FLOOR



OSNOVA SPRATA / FIRST FLOOR





# CASIA

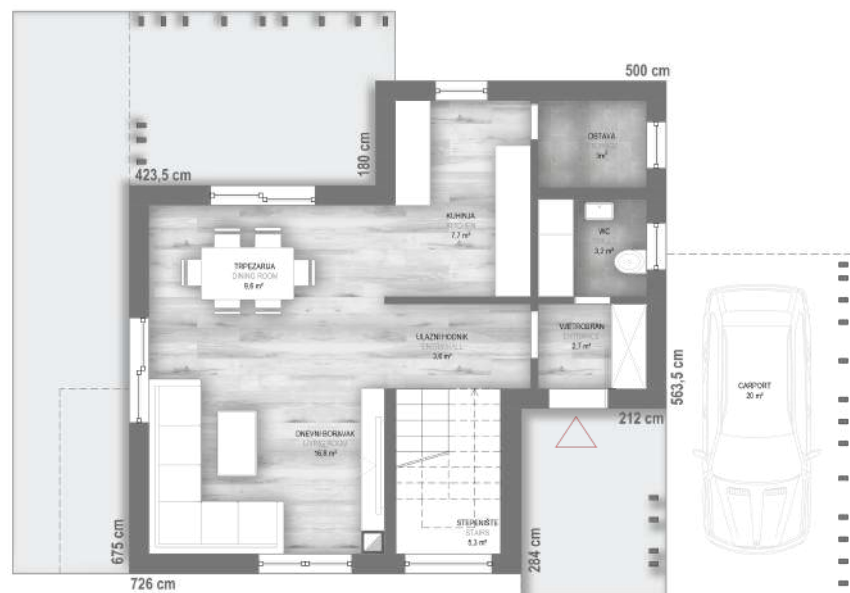
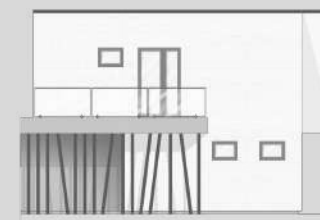
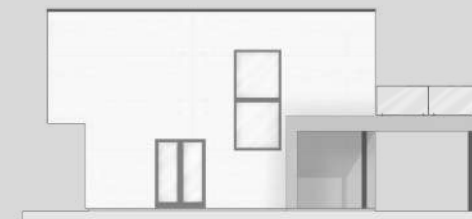
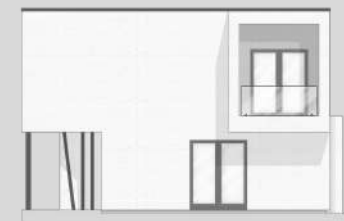


BTP=163m<sup>2</sup> natkriveni0+ trijem i carport 41,3m<sup>2</sup>

Biti isti, a biti poseban, zadatak je kojem je ova kuća savršeno odgovorila. Casia posjeduje sve što jedna moderna porodična kuća treba da ima, čak su i njene konture slične brojnim drugim, ali smo joj detaljima poput otkrivenih potpornih stubova utisnuli pečat originalnosti.

Conforming to our tried and tested concepts yet achieving something a bit special, we accomplished the aim of this project, resulting perfectly in the form of this house. Casia has everything that a modern family house should have. While its contours might seem similar to others, we specifically stamped our seal of originality with striking details, such as exposing supporting columns to provide but one example.

## FASADE / FACADES



OSNOVA PRIZEMLJA / GROUND FLOOR



OSNOVA SPRATA / FIRST FLOOR







Samo mjesto na kojem se osjećate ugodno može se nazvati domom. Promo tim trudi se odgovoriti različitim ukusima i potrebama, a krajnji cilj je da gradimo kuće koje će postati nečiji dom. Kontaktirajte nas, možda put do vaše kuće vodi upravo preko kompanije Promo.

Home is that special place that gives you comfort, happiness and security. Our team strives to encompass our client's unique tastes with the ultimate goal of creating a beautiful home. Contact us and let our team work with you to create your dream home.

