



Montažne kuće

PROMO

Donji Vakuf

Vaša kuća ustvari je puno više od same kuće. To je mjesto odakle idete i u koje se vraćate. Nisu to samo četiri zida sa krovom, nego dom koji želite i u koji uvijek rado dolazite. Zato smo omogućili našim kupcima da sami odluče, biraju i korigiraju crteže prema vlastitim ukusima i potrebama. Naši projektanti uvijek su tu da pomognu konačno oblikovanje vaše ideje savršenog doma. Dobrodošli u Promo po svoju kuću!

Your house is so much more than a house. It is the home from which you sally forth into the world and to which you return for its safety, comfort, and privacy. It is not just a collection of walls and a roof; it is the space you yearn for, it is your hearth. This is why we give our customers the freedom to choose, play with, and decide on the house plans and drawings according to their own tastes and needs. Our designers are always here to help you realise your concept of the perfect home. Welcome to your own unique Promo house!



Montažne kuće

PROMO

Donji Vakuf



Za Vas smo pripremili petnaest novih projekata stambenih kuća različitih stilova, veličina i oblika. Nadamo se da ćete pronaći Vašu idealnu kuću upravo u jednoj od novih Promo kuća.

We have prepared fifteen new housing projects of different styles, sizes and shapes. We hope you find your perfect home in one of the new Promo houses.



10 ARIA



12 LILIA



14 FLORA



16 VITA



18 DELTA



20 ASTRA



22 KAISA



24 NORDEN



26 INDA



30 PICCOLA



32 MADERA



34 ALBA



36 LUMINA



38 NOX



40 LEA



42 SARA



44 LAVANDA



46 BOR





Montažne kuće

PROMO

Donji Vakuf



Šume pokrivaju 30% ukupne kopnene površine Zemlje, što drvo čini najrasprostranjenijim prirodnim materijalom na našoj planeti. Drvo se već vijekovima koristi za izgradnju ljudskih nastambi, a kako je veoma dostupno u prirodi, tako je i njegova upotreba raznolika i česta. Koristi se u različite svrhe, najviše u industriji namještaja i građevinarstvu. Ne postoji nijedan građevinski materijal koji bi po svojim karakteristikama bio toliko idealan kao što je to drvo. To je jedini obnovljivi građevinski materijal, za čiju obradu se potroši najmanja količina energije. Drvo svojim jedinstvenim svojstvima, omogućuje visok stepen prefabrikacije i brzu montažu, pošto faza sušenja nije potrebna kao što je to slučaj kod betonske gradnje. Posebno ima pozitivan učinak u izgradnji stambenih prostora, jer se prefabrikovanom drvenom gradnjom dobivaju zdrave i prijatne prostorije za život. Na to najviše utiče specifičnost drveta koja se ogleda u tome što ono zadržava osobine živog organizma i nakon što je posječeno. Djeluje poput filtera koji čisti i vlaži zrak jer ima sposobnost da upija neugodne mirise, štetne pare i plinove. Zato mi u Promo-u više od 50 godina koristimo upravo drvo kao osnovni konstruktivni materijal u proizvodnji.

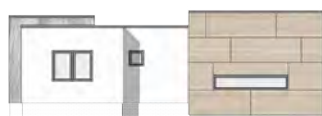
Forests cover 30% of the Earth's total land mass, making wood the most widespread natural, renewable, and pliable material on our planet. Wood has been used for millennia, notably in the building of human dwellings although, since it is easily accessible in nature, its applications have been diverse and widespread: from furniture production, agricultural fencing and stabling, ship-building, the manufacture of tools, to hunting traps and weapons, as well as habitation construction. By dint of its properties, there is no material as manageable and flexible as wood. It is the renewable building material whose processing consumes the smallest amount of energy. Wood's unique characteristics make it exemplary for off-site prefabrication and on-site rapid assembly (for example there is no drying phase - compare that with proving times for concrete structures). Wood's most fitting and versatile use comes in residential buildings. It offers a healthy and natural living space, stemming from the tree's unique attributes which retain the characteristics, delight, and harmony of a living organism, even after it's been harvested. Additionally, wood acts as a filter that cleans and moisturises the air, absorbing and dealing with unpleasant odours, harmful vapours, and gases. Nothing is more beautiful and natural than wood. That's why we in Promo, over 50 years, have used wood as a main structural material in our production.

ARIA

BTP = 72 m²

Idealna minijatura kuća za ljubitelje moderne arhitekture, pruža osjećaj povezanosti sa okolinom, a zbog finalne obrade fasade u trespi ima nevjerovatan efekat luksuzne vile.

An ideal miniature house for all the lovers of modern architecture, gives us a great feeling of connection with the natural environment, and for its final façade known as trespa, has the amazing effect of a luxurious villa.





OSNOVA PRIZEMLJA (GROUND FLOOR)





LILIA

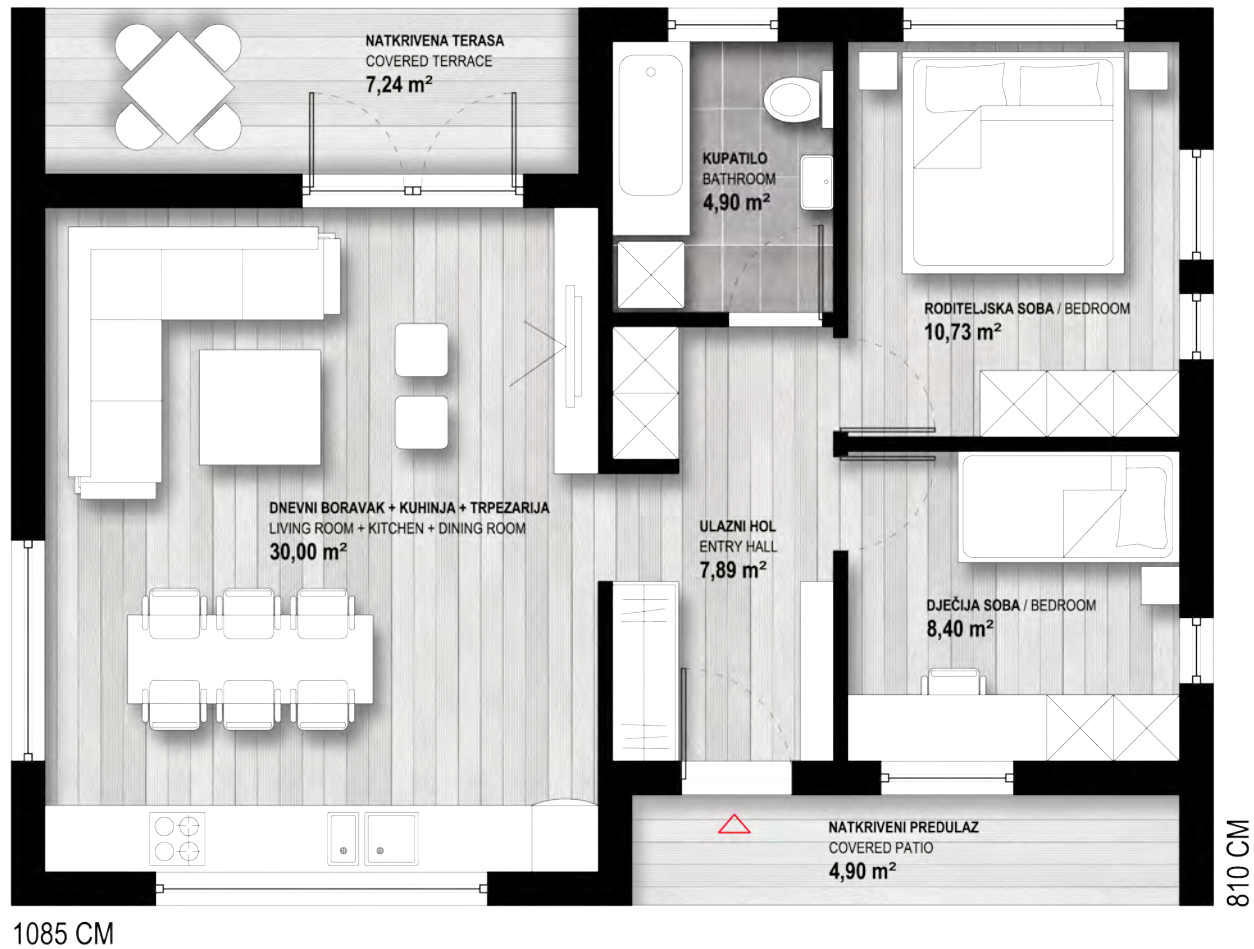
BTP = 82 m²

Kuća za one koji preferiraju klasične arhitektonske oblike u koje su vješto i diskretno umetnuta dostignuća savremene gradnje.

This is a house for those who prefer a classic architectural design of skillfully and discreetly harmonised elements within a modern construction.



OSNOVA PRIZEMLJA (GROUND FLOOR)



FLORA

BTP = 83 m²

Drvena kuća jednostavne forme sa savršeno iskorištenim i funkcionalnim prostorom, uz posebnu brigu o toplini porodičnog doma kao i o stvarnoj toplini u hladnim danima.

A wooden house with a simple form, combining harmoniously the use and functionality of space, and offering not only the cosiness of family life, but also real warmth on cold days.



OSNOVA PRIZEMLJA (GROUND FLOOR)





VITA

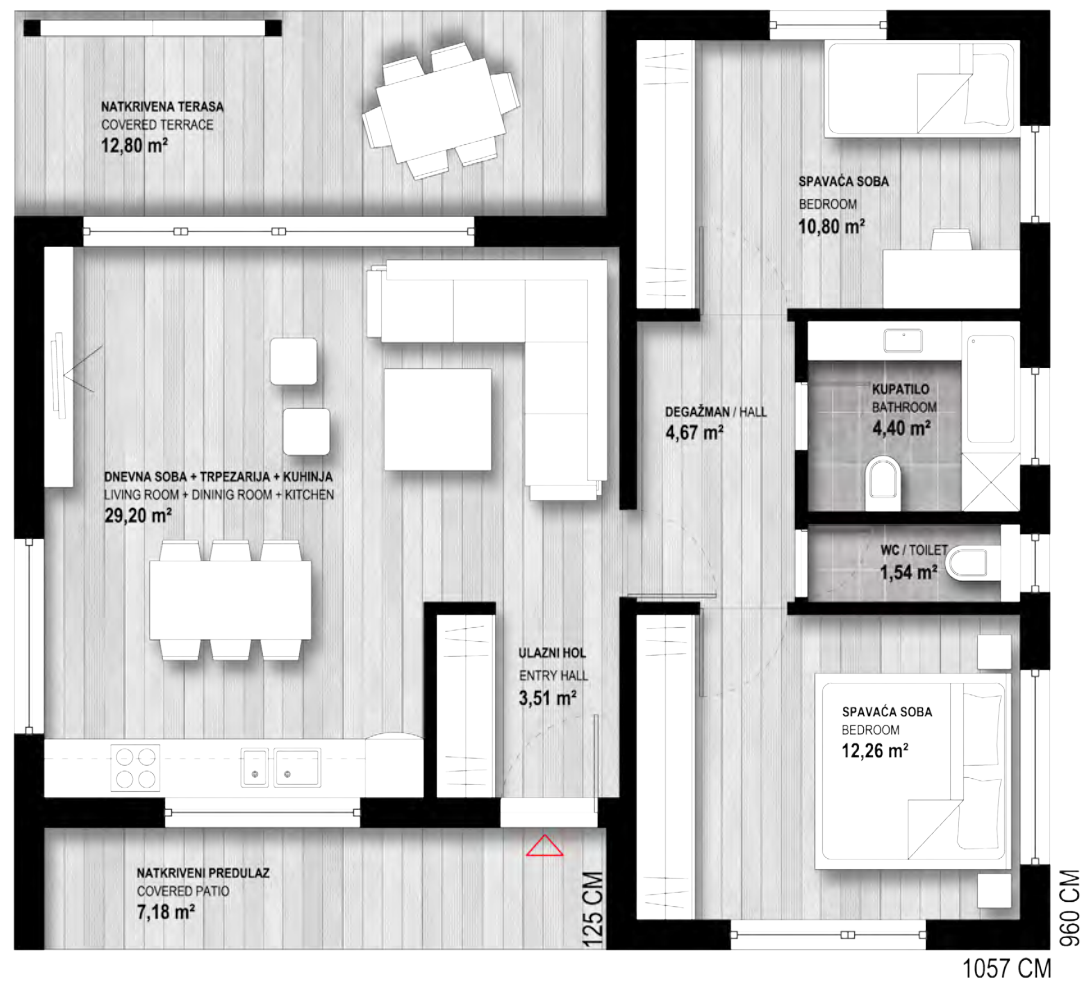
BTP = 92 m²

Nudimo najbolji dokaz da se elegancija najlakše i najučinkovitije postiže spretnim kombiniranjem jednostavnih oblika koji, opet, u međusobnoj korelaciji tvore sasvim novi, opet jednostavan, ali i oku ugodan i raskošan oblik.

With Villa Vita we prove that elegance is easily and most effectively achieved through a skilful combination of simple forms that together create a completely unique, simple, yet dramatic and magnificent ensemble.



OSNOVA PRIZEMLJA (GROUND FLOOR)



DELTA

BTP = 115 m²

Elegancija i funkcionalnost udružile su se kako bi načinile idealan prostor za porodicu koja teži međusobnoj bliskosti i harmoniji.

The combination of elegance and functionality creates an ideal family space characterised by intimacy and harmony.





OSNOVA PRIZEMLJA (GROUND FLOOR)



ASTRA

BTP = 124 m²

Kuća svojim oblikom "na lakat" i rasporedom koji prati liniju funkcionalizma sa odvojenim prostorima za dnevni boravak i za odmor, kao i prekrasnom terasom, oazom odvojenom od pogleda idealnom za porodična druženja.

This house with its "L" shaped form has a layout following functionalism, containing a separate space for a living room, with a beautiful terrace, an oasis away from the public eye and ideal for family gatherings.



OSNOVA PRIZEMLJA (GROUND FLOOR)

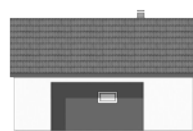


KAISA

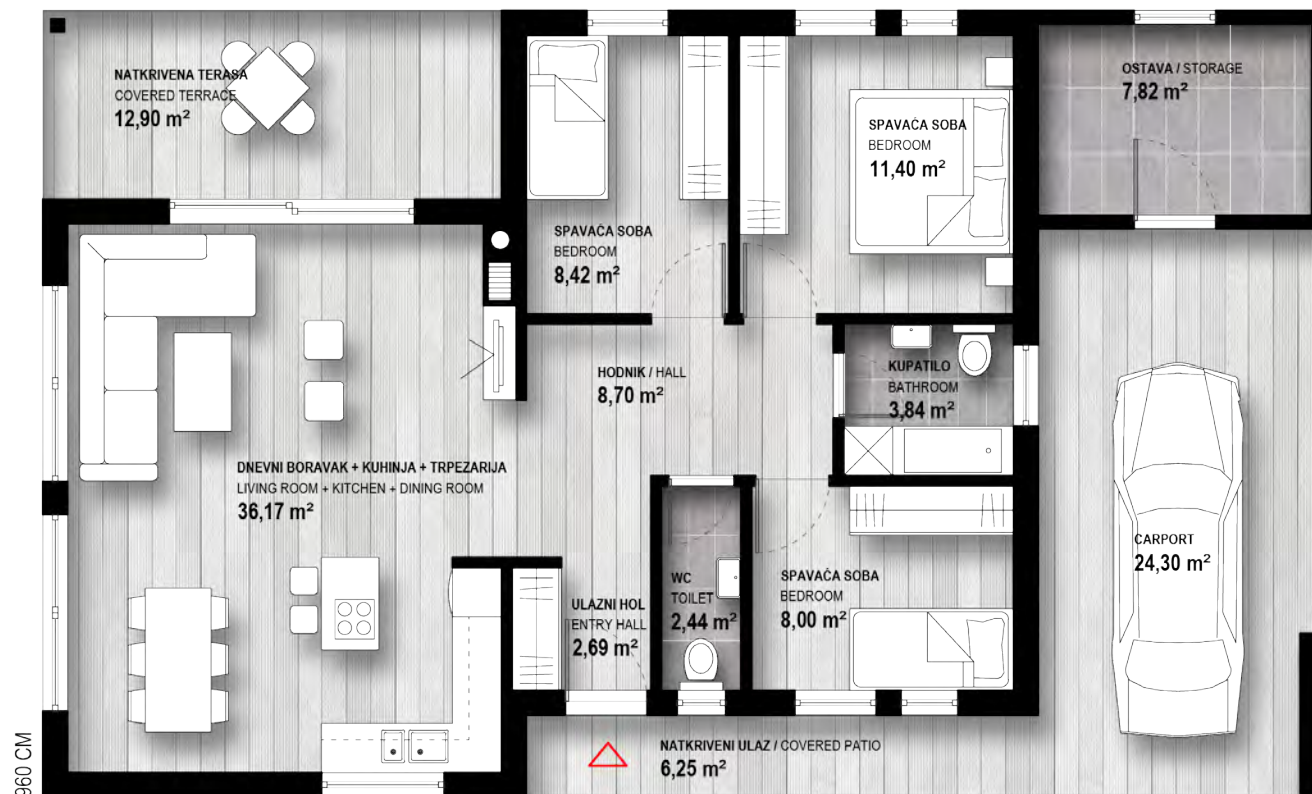
BTP = 140 m²

Ovu kuću možemo slobodno nazvati “sve u jednom”, jer sadrži sve što je potrebno za život jedne porodice. Ima sve prostorije potrebne za normalno funkcionisanje, smještene u minimalni broj kvadrata, a dodatni kvalitet predstavlja vanjska ostava i carport.

We consider this house an “all-in-one” home. It has everything necessary for the everyday life of a family: spaces for easy functionality, in a minimum area, with outside storage and carport.



1565 CM



OSNOVA PRIZEMLJA (GROUND FLOOR)



NORDEN

BTP = 208 m²

Prostrana Villa Norden prati osnovni zahtjev privlačnosti vanjskih i unutarnjih oblika lišenih kičastih detalja koji bi remetili funkcionalnu iskorištenost prostora.

The capacious Villa Norden achieves the basic prerequisite of harmony between exterior and interior spaces, without compromising ergonomic utilisation.



OSNOVA PRIZEMLJA (GROUND FLOOR)



INDA

BTP = 257 m²

Ova pompezna prizmenica predstavlja idealan spoj luksuza, elegancije i modernizma, dok istovremeno odiše jednostavnošću i ima gotovo savršen funkcionalni raspored.

This magnificent single-level house is an ideal mix of luxury, elegance and modernism, with a floor plan that exudes simplicity and exemplary functionality.





OSNOVA PRIZEMLJA (GROUND FLOOR)





Montažne kuće

PROMO

Donji Vakuf



Drvo je vrhunski prirodni materijal sa odličnim karakteristikama. Riječ je o veoma otpornom materijalu u odnosu na svoju težinu sa izvrsnim termičkim osobinama. Vanjski zid sa drvenom konstrukcijom može biti duplo tanji od betonskog ili zida od cigle, a da daje duplo bolju toplotnu izolaciju.

Wood is the finest natural material with superb characteristics. Its strength-to-weight ratio is exceptional, and it has phenomenal thermal characteristics. A properly constructed outer wall of wood can be twice as thin as a wall built out of cement or bricks and yet provide double the insulation.



PICCOLA

BTP = 73 m²

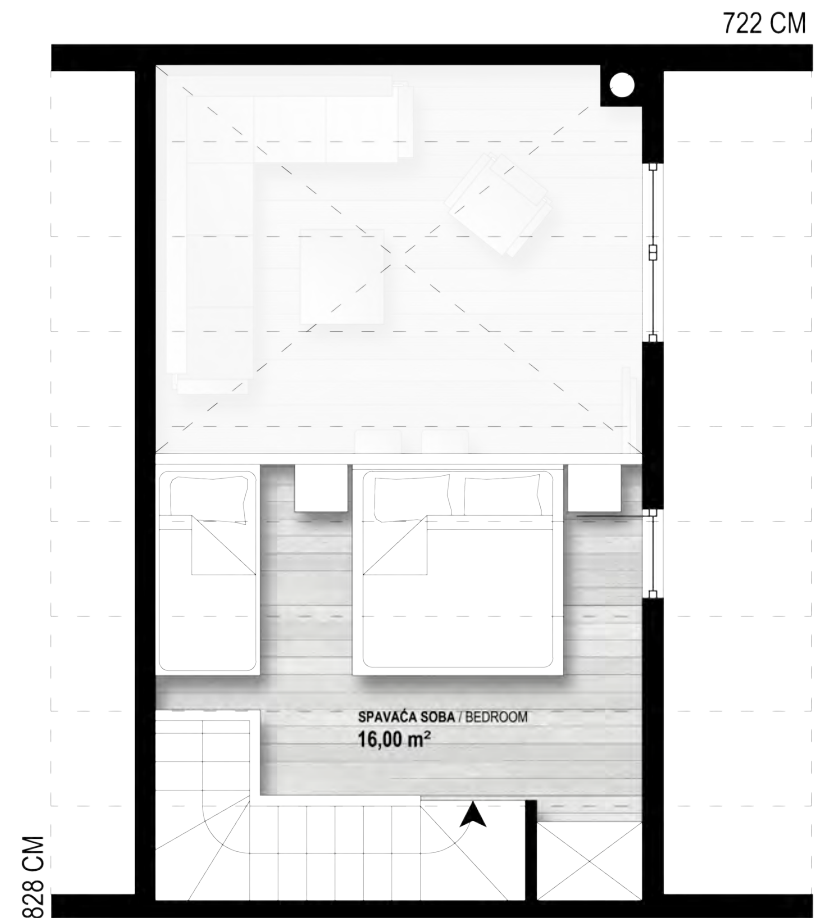
Stanovati u ovoj kući čini posebno zadovoljstvo onima kojima treba i koji vole kvalitetan odmor u lijepom okruženju, a to im svakako nudi prekrasna galerija za spavanje.

Living in this house offers a particular pleasure to those who desire quality relaxation in a beautiful setting, especially within the stunning sleeping gallery.





OSNOVA PRIZEMLJA (GROUND FLOOR)



OSNOVA SPRATA (FIRST FLOOR)



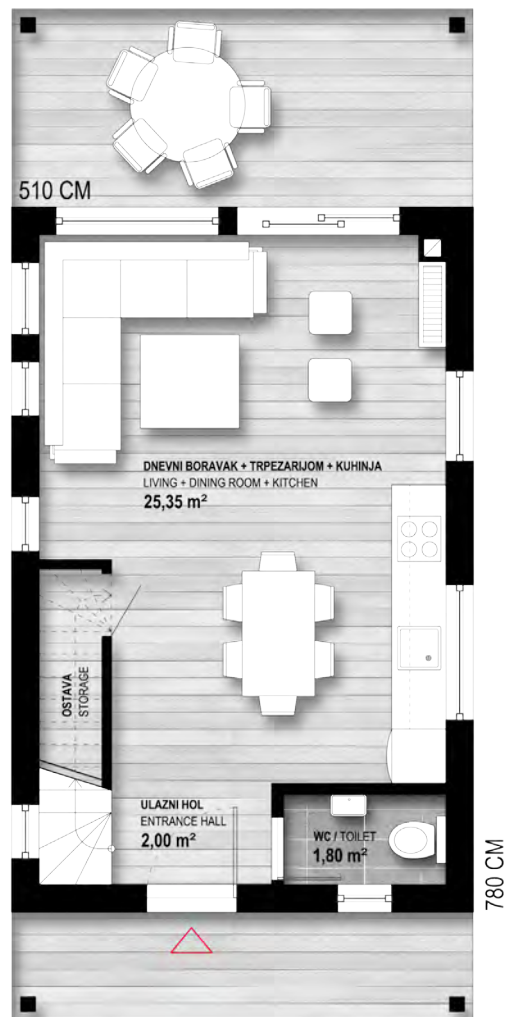
ALBA

BTP = 97 m²

U kombinaciji drvene i bijele fasade, sa svojim sadržajem i rasporedom, ova spratnica je idealna za vikend kuću, a krasi je i dvije terase sa obje strane tako da se dobije savršen pogled na okolinu.

Combining a wooden and white facade, with excellent functionality in its disposition of rooms, this two-storey house makes a desirable weekend home. It has two terraces on each side, offering panoramic views over its surroundings.





OSNOVA PRIZEMLJA
(GROUND FLOOR)



OSNOVA SPRATA
(FIRST FLOOR)

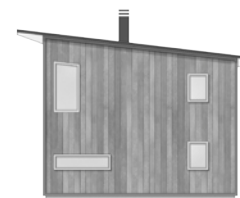
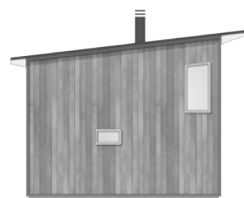


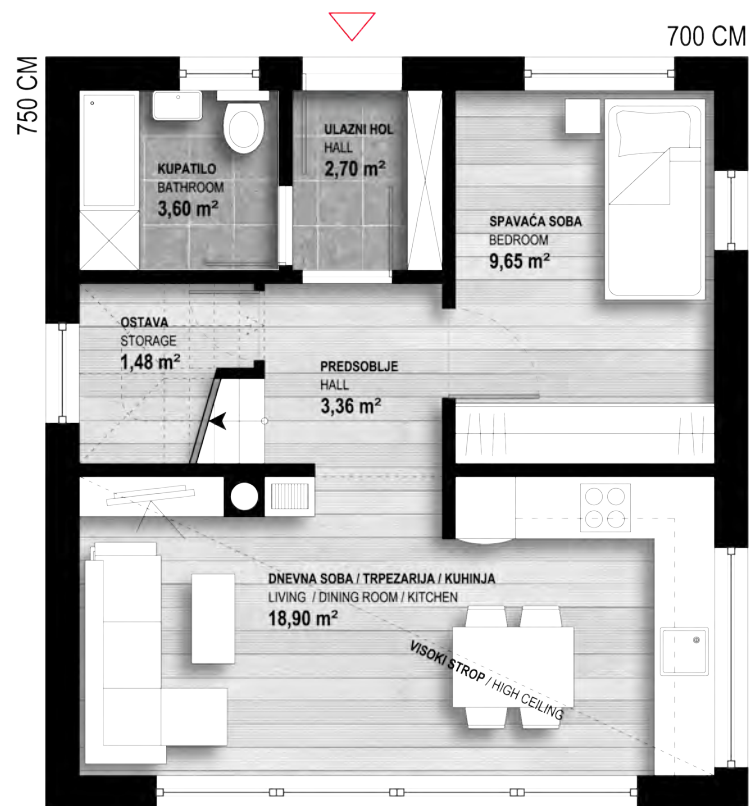
MADERA

BTP = 99 m²

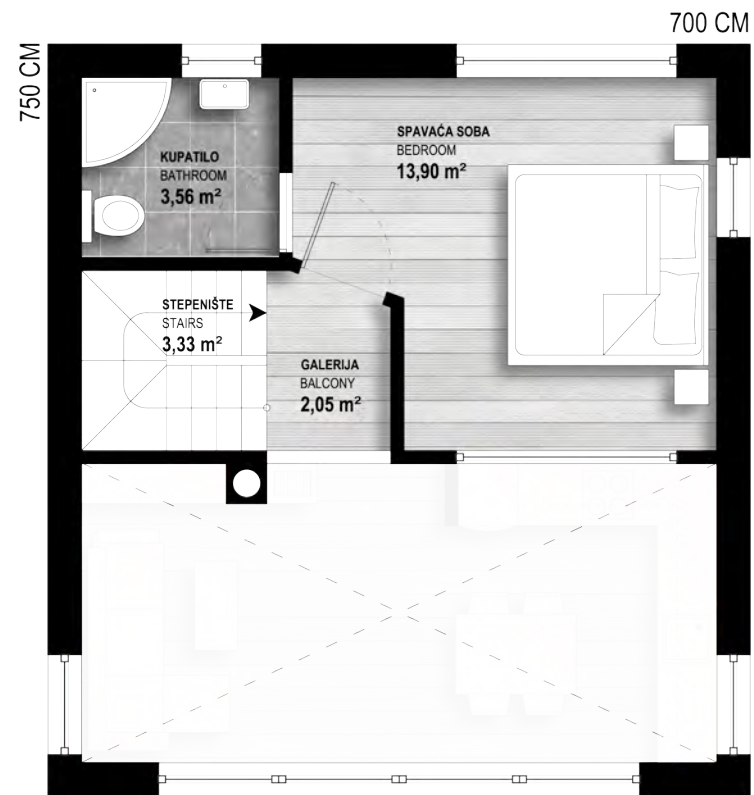
Savršena kuća za svakodnevni boravak ili za odmor koja, zahvaljujući velikim staklenim otvorima, pruža ugodni osjećaj povezanosti sa prirodnim okruženjem.

A perfect house for all-day activities and rest. With its large glass-fronted spaces, Madera gives a warm feeling of connection with its outdoor surroundings.





OSNOVA PRIZEMLJA (GROUND FLOOR)



OSNOVA SPRATA (FIRST FLOOR)



LUMINA

BTP = 127 m²

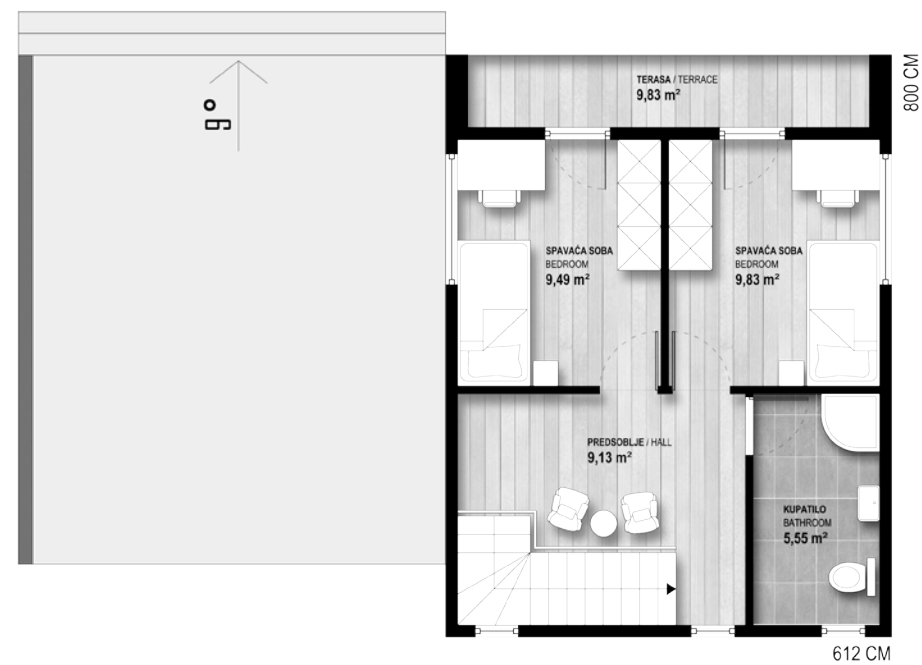
Kuća koju, prije svega, plijeni svojom modernošću, kako u oblikovanju eksterijera i interijera, tako i u izboru materijala za gradnju.

This house captivates and delights with its modernism and its exterior and interior design, all combined with a sensitive choice of quality construction materials.





OSNOVA PRIZEMLJA (GROUND FLOOR)



OSNOVA SPRATA (FIRST FLOOR)

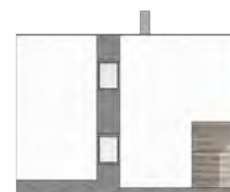
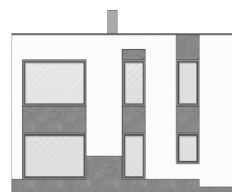
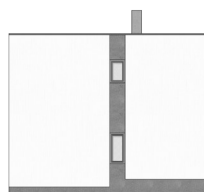


NOX

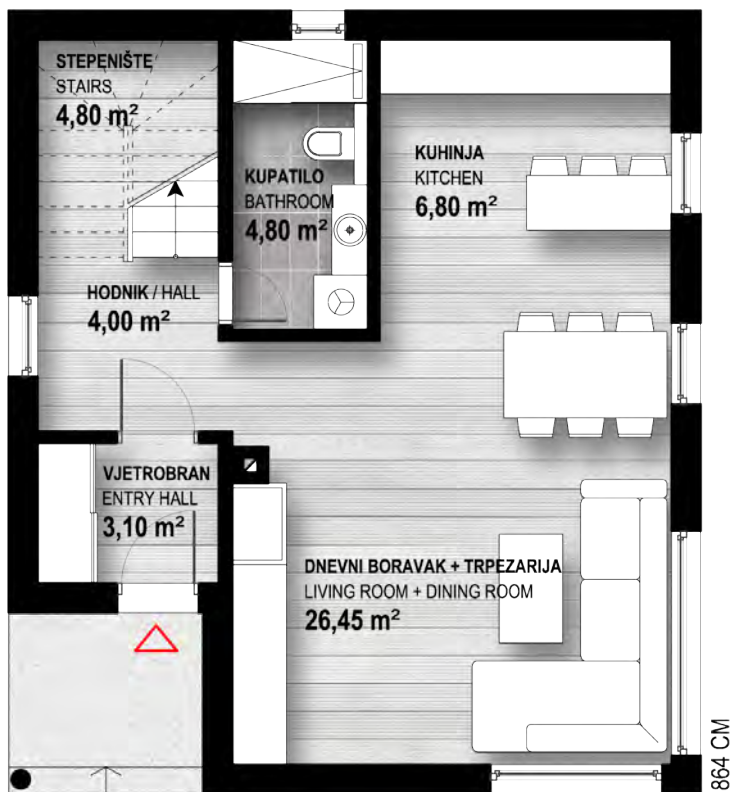
BTP = 128 m²

Idealan primjer kako se, na relativno malom prostoru, pametnim planiranjem može dobiti dom koji sadrži sve što je neophodno za ugodno porodično stanovanje.

An ideal example of space utilisation where a well-planned design generates a perfect living space in a relatively small area, offering all that is required for comfortable family living.

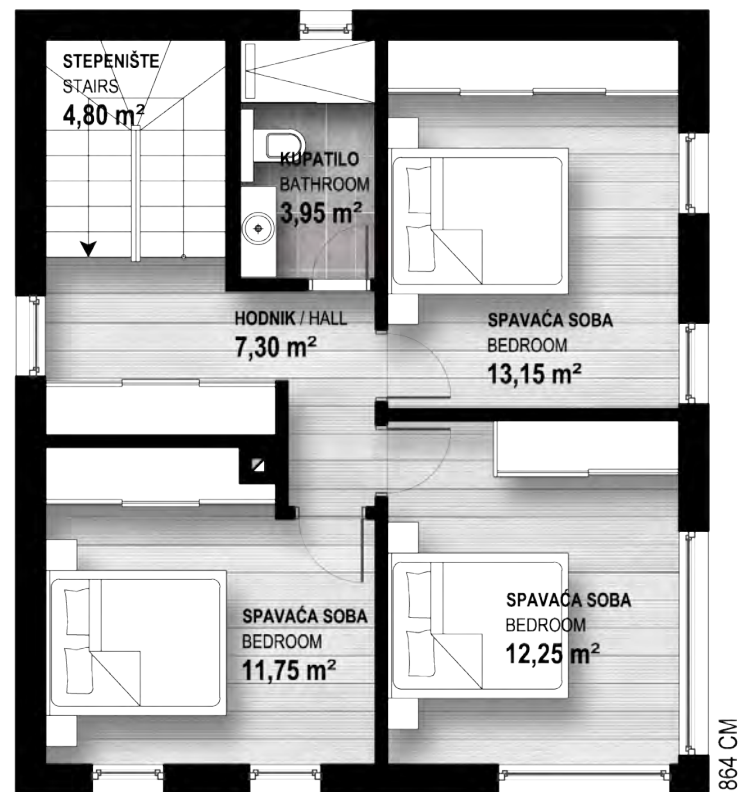


764 CM



OSNOVA PRIZEMLJA (GROUND FLOOR)

764 CM



OSNOVA SPRATA (FIRST FLOOR)





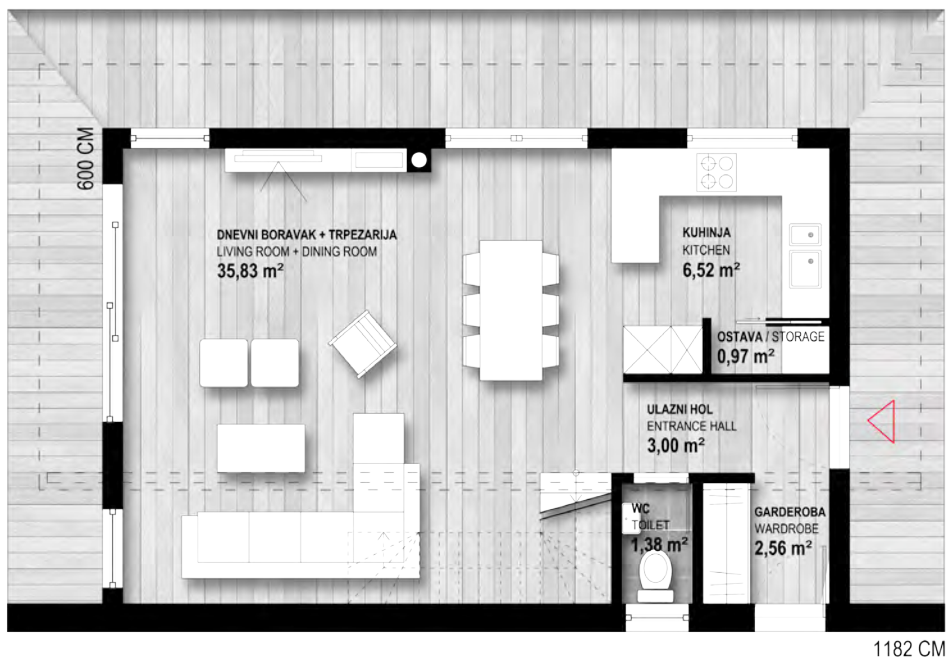
LEA

BTP = 140 m²

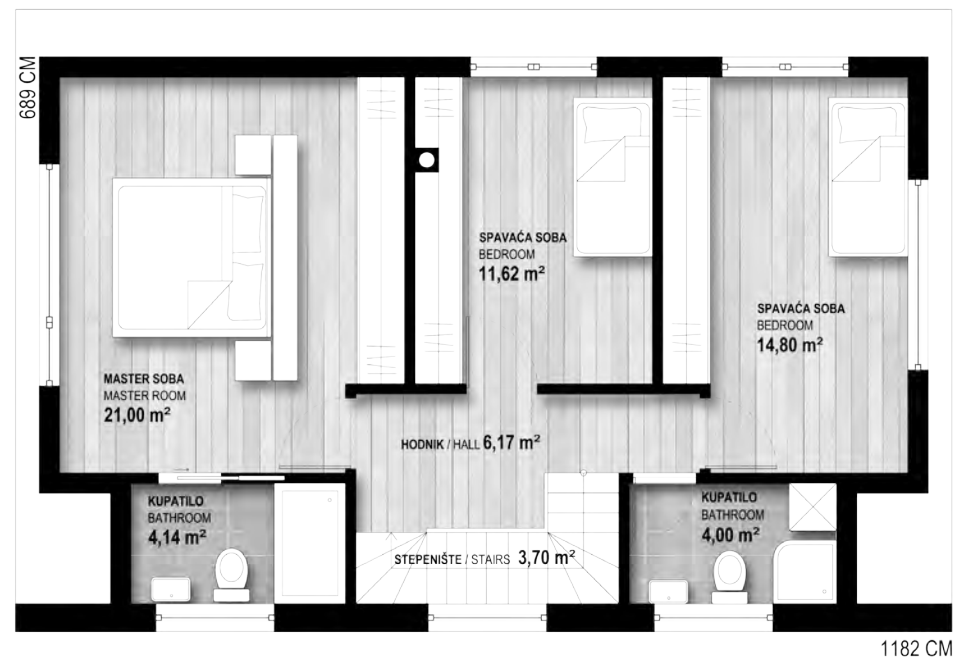
Drvena fasada u kombinaciji sa bijelom i velikim staklenim površinama čuvaju idilični osjećaj prirodne topline unutar modernog arhitektonskog dizajna oblikovanog na savremenijim građevinskim materijalima.

The wooden façade, combined with whitened walls and large glass areas, preserve the idyllic warmth of nature inside this contemporarily designed home, constructed with the finest materials.





OSNOVA PRIZEMLJA (GROUND FLOOR)



OSNOVA SPRATA (FIRST FLOOR)





SARA

BTP = 227 m²

Sa svoje četiri spavaće sobe, svaka sa kupaonicom, te impresivnim balkonskim površinama, Sara je zasigurno prostor za one koji žele živjeti u top klasi raskoši i glamura moderne gradnje.

With its 4 en-suite bedrooms and their impressively spacious balconies, Villa Sara is designed for those who would like to live in the top echelons of luxury and glamour, constructed with contemporary materials and methods.

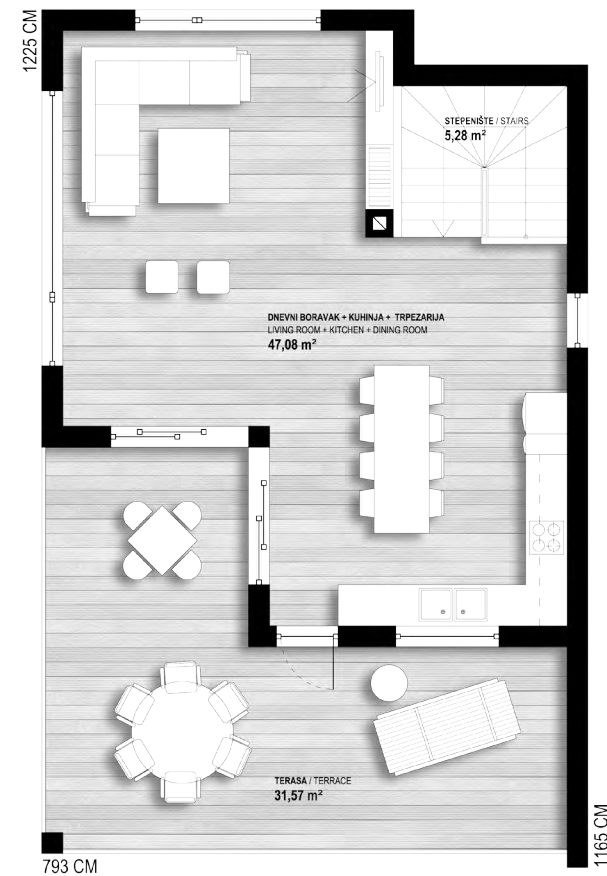




OSNOVA PRIZEMLJA (GROUND FLOOR)



PRVI SPRAT (FIRST FLOOR)



DRUGI SPRAT (SECOND FLOOR)



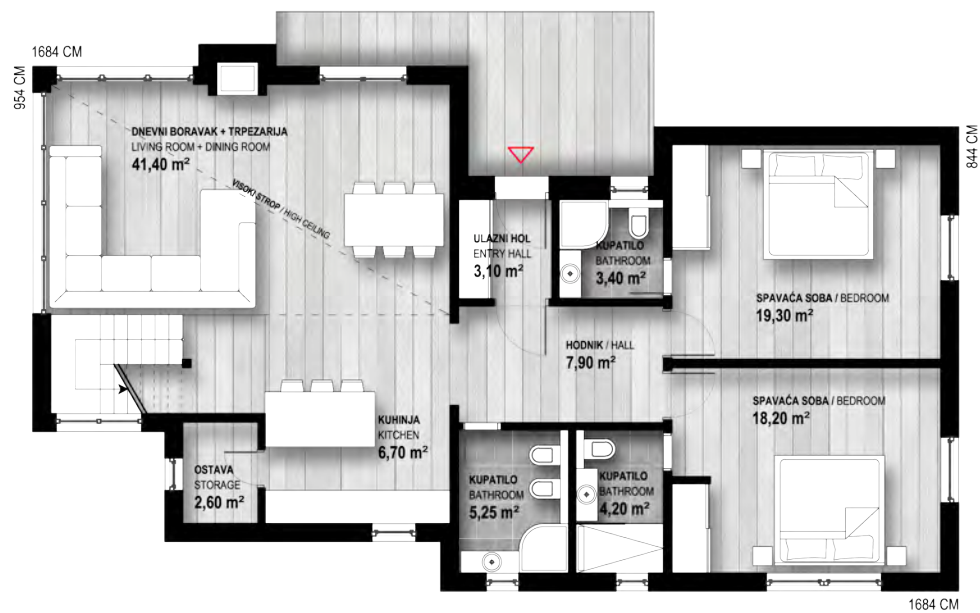
LAVANDA

BTP = 235 m²

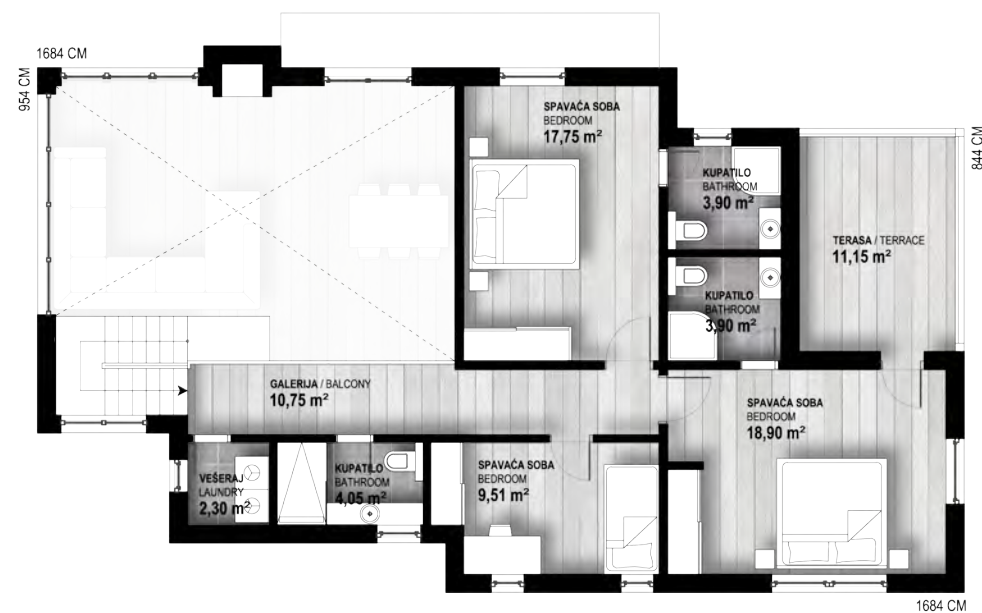
Biser mediteranske raskoši za one koji vole osjećaj luksuza, sa pet spavaćih soba s kupatilom, te prostranim i svijetlim dnevnim boravkom visokog stropa.

The pearl of Mediterranean luxury for those who derive great pleasure from splendour; Lavanda offers 5 en-suite bedrooms and a very spacious and light family room with a high ceiling.





OSNOVA PRIZEMLJA (GROUND FLOOR)



OSNOVA SPRATA (FIRST FLOOR)



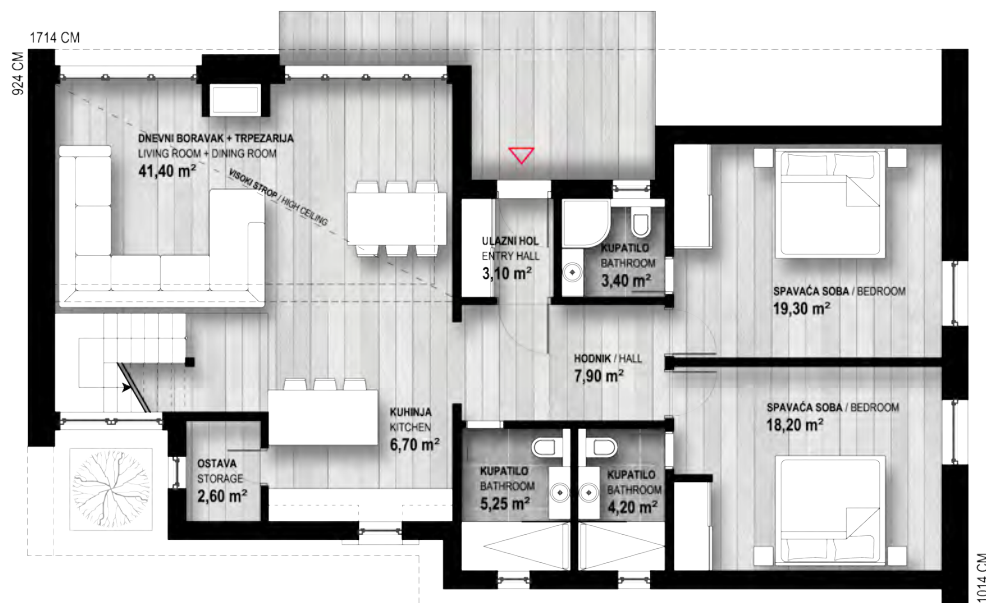
BOR

BTP = 243 m²

Raskošna, bogata kuća koja svakom njenom stanovniku, uz komotan i ugodan prostor zajednički boravak, nudi kvalitetan vlastiti intimni kutak sa kupatilima uz svaku spavaću sobu.

Aside from a comfortable and pleasant family room, this luxurious abode offers each of its inhabitants their own high quality, intimate hide-away, incorporating en-suite bedrooms.





OSNOVA PRIZEMLJA (GROUND FLOOR)



OSNOVA SPRATA (FIRST FLOOR)





Montažne kuće

PROMO

Donji Vakuf



Dočekajte svoju prvu jutarnju kafu u prijatnoj atmosferi svog novog Promo doma. Odaberite najidealniji prostor za boravak Vaše porodice. Savršena funkcionalnost našeg doma omogućuje Vaš mir i idealan komfort za kojim oduvijek žudite. Promo tim Vam stoji na usluzi!

Enjoy your first morning coffee in the cosy atmosphere of your new Promo home. Choose the ideal space for your family's stay. The perfect functionality of our homes give you the peace and the ideal comfort you have always dreamed of. The Promo team is always at your service!



Montagne kuće

PROMO

Donji Vakuf





Montažne kuće PROMO Donji Vakuf

Adresa: Ul. 770 Sbbr bb
70220 Donji Vakuf
Bosna i Hercegovina
Tel Centrala: + 387 30 205 360
+ 387 30 205 596
Tel Komercijala: + 387 30 205 488
+ 387 30 205 046
E-mail: info@promo.ba
Web: www.promo.ba

Predstavništvo u Sarajevu:

Adresa: Đoke Mazalića br.4
71000 Sarajevo, BiH
Tel: + 387 33 942 200

Predstavništvo u Zagrebu:

Adresa: Ilica br.137
10000 Zagreb
R.Hrvatska
Tel: +385 15 61 69 58